



Document of Compliance

Special Requirements for Ships Carrying Dangerous Goods

Issued in the pursuance of the requirements of regulation II-2/19.4 of the International Convention for Safety of Life at Sea, 1974, as amended under the authority of the Government of the Republic of Liberia by Lloyd's Register Asia.

	Particulars of ship
Name of ship	ATOUT
Distinctive number or letters	14890
Port of registry	Monrovia
Ship type	Container Ship
Gross tonnage	18,199
IMO number	9354648
Date on which keel laid	17 December 2008

This is to certify:

1. that the construction and equipment of the above mentioned ship was found to comply with the provisions of regulation II-2/19 of the International Convention of Safety of Life at Sea, 1974 as amended; and
2. that the ship is suitable for the carriage of those classes of dangerous goods as specified in the appendix attached hereto, subject to any provisions in the International Maritime Dangerous Goods (IMDG) Code and the International Maritime Solid Bulk Cargoes (IMSBC) Code for individual substances also being complied with.

Important:

Possession of this Document does not absolve the Master from his responsibility to comply with safe operational procedures including those laid down in the International Maritime Dangerous Goods Code and the International Maritime Solid Bulk Cargoes (IMSBC) Code

This Document is valid until **30 April 2020**

Date of completion of the survey on which this Document of Compliance is based **12 May 2015**

Issued at **Singapore**

on **12 May 2015**



Chin KJ
Surveyor to Lloyd's Register Asia

a member of the Lloyd's Register group.

Note: There are no special requirements in the above-mentioned regulation II-2/19 for the carriage of dangerous goods of classes 6.2 and 7, or for the carriage of dangerous goods in limited quantities as defined in chapter 3.4 of the IMDG Code.

Lloyd's Register Group Limited, its affiliates and subsidiaries and their respective officers, employees or agents are, individually and collectively, referred to in this clause as 'Lloyd's Register'. Lloyd's Register assumes no responsibility and shall not be liable to any person for any loss, damage or expense, caused by reliance on the information or advice in this document or howsoever provided, unless that person has signed a contract with the relevant Lloyd's Register entity for the provision of this information or advice and in that case any responsibility or liability is exclusively on the terms and conditions set out in that contract.

Cargo Space	1	2	3	4	5	6	7	8
Cargo Space Name	Holds 1-5	Weather Deck						
Type *	2B	6	---	---	---	---	---	---
Explosives	---	P	---	---	---	---	---	---
Explosives, Division 1.4 Compatibility group 'S'	P	P	---	---	---	---	---	---
Flammable Gases	---	P	---	---	---	---	---	---
Non-flammable, Non-toxic Gases	P	P	---	---	---	---	---	---
Toxic Gases (flammable)	P	P	---	---	---	---	---	---
Toxic Gases (non-flammable)	P	P	---	---	---	---	---	---
Flammable liquids - low and intermediate flashpoint, <23°C	---	P	---	---	---	---	---	---
Flammable liquids - high flashpoint, ≥23°C but ≤60°C	P	P	---	---	---	---	---	---
Flammable solids, self-reactive substances and solid desensitized explosives	P	P	---	---	---	---	---	---
Substances liable to spontaneous combustion	P	P	---	---	---	---	---	---
Substances which, in contact with water, emit flammable gases (liquids)	P	P	---	---	---	---	---	---
Substances which, in contact with water, emit flammable gases (solids)	P	P	---	---	---	---	---	---
Oxidising substances (agents)	P	P	---	---	---	---	---	---
Organic Peroxides	---	P	---	---	---	---	---	---
Toxic Substances (liquids) - low and intermediate flashpoint, <23°C	---	P	---	---	---	---	---	---
Toxic Substances (liquids) - high flashpoint, ≥23°C but ≤60°C	---	P	---	---	---	---	---	---
Toxic Substances (liquids) - non flammable	---	P	---	---	---	---	---	---
Toxic Substances (solids)	P	P	---	---	---	---	---	---
Corrosives (liquids) - low and intermediate flashpoint, <23°C	---	P	---	---	---	---	---	---
Corrosives (liquids) - high flashpoint, ≥23°C but ≤60°C	---	P	---	---	---	---	---	---
Corrosives (liquids) - non flammable	P	P	---	---	---	---	---	---
Corrosives (solids)	P	P	---	---	---	---	---	---
Miscellaneous Dangerous Substances and Articles	P	P	---	---	---	---	---	---
B	BULK GOODS ALLOWED							
P	PACKAGED GOODS ALLOWED							
A	PACKAGED AND BULK GOODS ALLOWED							
---	NOT ALLOWED							

Space Type Definitions

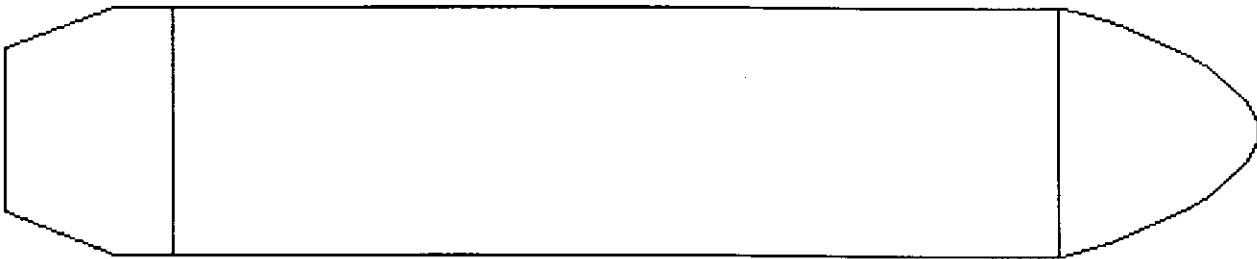
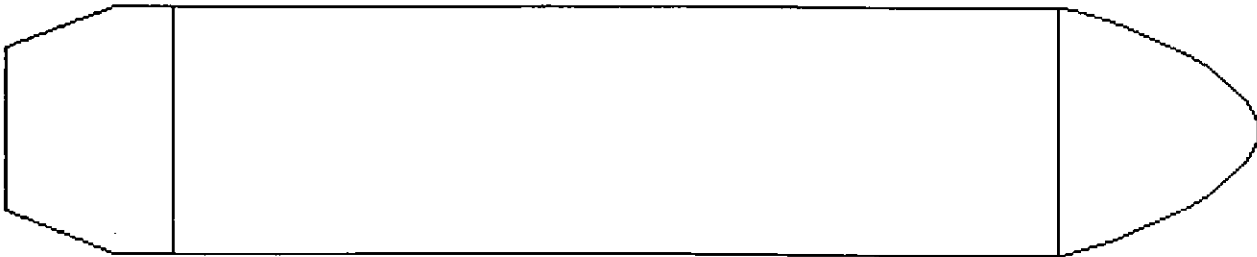
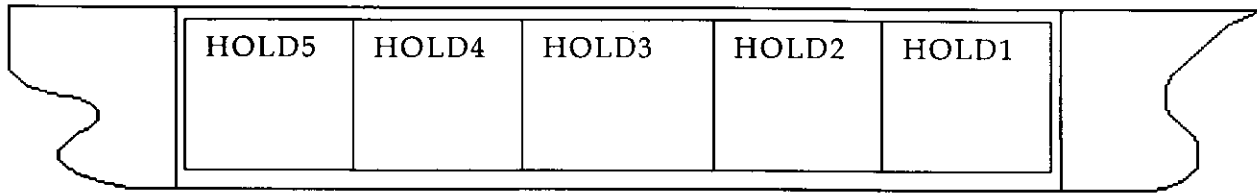
The Space Types listed in Appendices I and/or II of this Document of Compliance refer to the following types of cargo space in which dangerous goods may be carried:

- 1 Ships and cargo spaces not specifically designed for the carriage of freight containers but intended for the carriage of dangerous goods in packaged form including goods in freight containers and portable tanks.
- 2A Purpose-built container ships and cargo spaces intended for the carriage of dangerous goods in freight containers and portable tanks (Open and closed freight containers).
- 2B Purpose-built container ships and cargo spaces intended for the carriage of dangerous goods in freight containers and portable tanks (Closed freight containers and portable tanks only).
- 3A Ro-ro ships and ro-ro cargo spaces intended for the carriage of dangerous goods (Closed ro-ro cargo spaces not capable of being sealed).
- 3B Ro-ro ships and ro-ro cargo spaces intended for the carriage of dangerous goods (Closed ro-ro cargo spaces capable of being sealed).
- 3C Ro-ro ships and ro-ro cargo spaces intended for the carriage of dangerous goods (Open ro-ro cargo spaces).
- 4 Ships and cargo spaces intended for the carriage of solid dangerous goods in bulk.
- 5 Ships and cargo spaces intended for the carriage of dangerous goods other than liquids and gases in bulk in shipborne barges.
- 6 Weather decks, space types 1 to 5 inclusive.

General Notes

- A Goods of Class 1 should not be stowed within a horizontal distance of 6 metres from any fire, machinery exhausts, galley uptakes, lockers used for combustible stores or other potential sources of ignition and not less than a horizontal distance of 8 metres from the bridge, living quarters and life saving appliances. Classes 1.1 to 1.6 Dangerous Goods are to be stowed 3m from the machinery space boundary in all cases.
- B As an alternative to the insulation of bulkheads forming boundaries between cargo spaces and machinery spaces of category 'A' to A-60 standard, all dangerous goods must be stowed at least 3 metres horizontally from such bulkheads. If the uninsulated deck above the machinery space is a weather deck, dangerous goods are prohibited only for the portion of the deck located above the machinery space.
- C If the weather deck forming a boundary between cargo spaces and machinery spaces of category 'A' is not insulated to A60 standard, dangerous goods are prohibited for the portion of the deck located above the machinery space.
- D When dangerous goods of classes 2.1, 2.3, 3, 4, 5.1, 6.1(B), 6.1(C), 6.1(D), 8(B), 8(C) and 9 are carried underdeck, they are to be carried in closed freight containers only.
- E For classes 2, 3, 6.1, and 8, when carried in closed freight containers in purpose built dedicated container cargo spaces, the ventilation rate may be reduced to not less than two air changes per hour. For the purpose of this requirement a portable tank is a closed container.
- F Power ventilation is not required for classes 4 and 5.1 when carried in closed freight containers in purpose built dedicated container cargo spaces. For the purpose of this requirement a portable tank is a closed container.
- G Stowage and segregation of freight containers of different classes of dangerous goods in the hold and on the upper deck in compliance with the applicable requirements of the IMDG Code remain the responsibility of the Master.
- H There are no special requirements in Regulation II-2/19 for the carriage of dangerous goods Classes 6.2 and 7, or for the carriage of dangerous goods in limited quantities as defined in Chapter 3.4 of the IMDG Code.
- I Portable fire extinguishers with a total capacity of at least 12 kg of dry powder are to be provided. These extinguishers shall be in addition to any portable fire extinguishers required elsewhere in SOLAS Chapter II-2, in accordance with SOLAS 1974, as amended, Chapter II-2, regulation 19, paragraph 2.7. Class 3, 4, 5.1, 6.1B, 6.1C, 8B and 8C dangerous goods are not to be carried on the weather deck until these extinguishers have been provided.
- J Prior to the carriage of any Class of Dangerous Goods, a fixed gas fire-extinguishing system must be provided, in accordance with 1974 SOLAS chapter II-2, regulation 10.7.2
- K Class 5.2 Dangerous Goods cannot be carried underdeck as per the IMDG Code.

Ship Layout



Annual surveys

This is to certify that, at a survey, the ship was found to comply with the relevant provisions of SOLAS.

1st Annual survey

Signed:

Place of survey

Date

Yokohama
12 APRIL 2016



S. KATO



2nd Annual survey

Signed:

Place of survey

Date

3rd Annual survey

Signed:

Place of survey

Date

4th Annual survey

Signed:

Place of survey

Date
