

# DOCUMENT OF COMPLIANCE FOR THE CARRIAGE OF DANGEROUS GOODS

"F"

Issued in pursuance of the requirement of  
REGULATION II-2/19.4 OF THE INTERNATIONAL CONVENTION FOR THE SAFETY OF LIFE AT SEA, 1974,  
as amended,



under the authority of the Government of the

## REPUBLIC OF THE MARSHALL ISLANDS

by DNV GL

Name of Ship	Distinctive Number or Letters	Port of Registry	Ship Type	IMO Number
ASIA IPSA	5354	Majuro	Container	9270816

THIS IS TO CERTIFY:

- 1 That the construction and equipment of the above-mentioned ship have been found to comply with the provisions of regulation II-2/19 of the International Convention for the Safety of Life at Sea, 1974, as amended.
- 2 That the ship is suitable for the carriage of those classes of dangerous goods as specified in the appendix hereto, subject to any provisions in the International Maritime Dangerous Goods (IMDG) Code for individual substances, materials or articles also being complied with.

This document is valid until **31st October, 2018**.

Issued at **Hamburg, 23rd July, 2014**

  
 Anette Rohr-Keune

  
 Rainer Gerlach

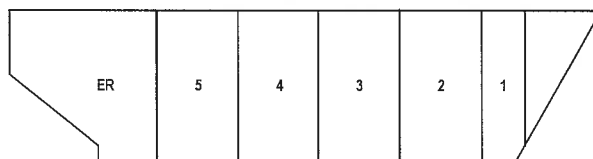
  
 HQ 1002

NOTE: There are no special requirements in the above-mentioned regulation II-2/19 for the carriage of dangerous goods of classes 6.2 and 7, and for the carriage of dangerous goods in limited quantities, as required in chapter 3.4 of the IMDG Code, and excepted quantities, as required in chapter 3.5 of the IMDG Code.

# APPENDIX PACKAGED GOODS IN UNDERDECK SPACES

Cargo spaces indicated in the plan are corresponding with the table below

- P Indicates  
PACKAGED GOODS  
PERMITTED
- C Indicates  
IN CLOSED FREIGHT  
CONTAINERS PERMITTED
- X Indicates  
NOT PERMITTED



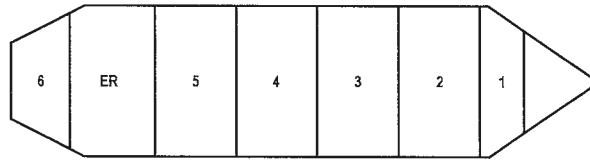
Class	Underdeck space(s)				
	1	2	3, 4	5	
1.1 to 1.6	X	X	X	X	
1.4S	P	P	P	P	
2.1 hydrogen and hydrogen mixtures exclusively	P 1)	X	X	X	
2.1 other than hydrogen and hydrogen mixtures	P 1)	X	X	X	
2.2	P	P	P	P	
2.3 flammable	X	X	X	X	
2.3 non-flammable	X	X	X	X	
3 FP < 23°C	P 1)	X	X	X	
3 23°C ≤ FP ≤ 60°C	P	P	P	P	
4.1	P	P	P 2)	P 2)	
4.2	P	P	P 2)	P 2)	
4.3 liquids	P 3)	P 3)	X	X	
4.3 solids	P	P	C	C	
5.1	P	P	P 2)	P 2)	
5.2	X	X	X	X	
6.1 liquids FP < 23°C	P 1)	X	X	X	
6.1 liquids 23°C ≤ FP ≤ 60°C	P	X	X	X	
6.1 liquids FP > 60°C	P	X	X	X	
6.1 solids	P	P	P 4)	P 4)	
8 liquids FP < 23°C	P 1)	X	X	X	
8 liquids 23°C ≤ FP ≤ 60°C	P	P 5)	X	X	
8 liquids FP > 60°C	P	P 5)	P 5)	P 5)	
8 solids	P	P	P	P	
9 goods evolving flammable vapour exclusively	P 1)	X	X	X	
9 other than goods evolving flammable vapour	P	P	P 4)	P 4)	

- 1) The following electrical equipment in the cargo space(s) is to be isolated from the electrical supply and to be secured against unintentional reconnection (refer to the List of Equipment): floodlight(s)
- 2) If stowage in a "mechanically ventilated space" is stipulated by the IMDG Code, in closed freight containers.
- 3) Except goods having a flashpoint less than 23°C listed in the IMDG Code.
- 4) Except goods for which stowage in a "mechanically ventilated space" is stipulated by the IMDG Code.
- 5) Except goods having a subsidiary risk class 6.1.

## APPENDIX PACKAGED GOODS ON DECK

Cargo spaces indicated in the plan are corresponding with the table below

P Indicates  
PACKAGED GOODS  
PERMITTED  
X Indicates  
NOT PERMITTED



Class	On deck space(s)			
	ER 1)	1 to 5	6	
1.1 to 1.6	X	P	X	
1.4S	P	P	P	
2.1 hydrogen and hydrogen mixtures exclusively	X	P	P	
2.1 other than hydrogen and hydrogen mixtures	X	P	P	
2.2	X	P	P	
2.3 flammable	X	P	P	
2.3 non-flammable	X	P	P	
3 FP < 23°C	X	P	P	
3 23°C ≤ FP ≤ 60°C	X	P	P	
4.1	X	P	P	
4.2	X	P	P	
4.3 liquids	X	P	P	
4.3 solids	X	P	P	
5.1	P 2)	P	P	
5.2	X	P	P	
6.1 liquids FP < 23°C	X	P	P	
6.1 liquids 23°C ≤ FP ≤ 60°C	X	P	P	
6.1 liquids FP > 60°C	P	P	P	
6.1 solids	P	P	P	
8 liquids FP < 23°C	X	P	P	
8 liquids 23°C ≤ FP ≤ 60°C	X	P	P	
8 liquids FP > 60°C	P	P	P	
8 solids	P	P	P	
9 goods evolving flammable vapour exclusively	P	P	P	
9 other than goods evolving flammable vapour	P	P	P	

1) Stowage applicable between frame no. 16 and 36.

2) Except goods for which stowage "protected from sources of heat" is stipulated by the IMDG Code.

## APPENDIX LIST OF EQUIPMENT

according to the provisions of regulation II-2/19

Para.	Requirement	Equipment provided
.1.1	Compliance with Reg. 10.7.2	<b>Hold 1 to 5: Fixed CO2 system</b>
.3.1.1	Immediate supply of water	<b>Remote start of the main fire pumps from the navigation bridge</b>
.3.1.2	Quantity of water and arrangement of hydrants	<b>Provided</b>
.3.1.3	Water cooling	<b>Hold 1: Fixed water-spraying system of 5 l/min per m<sup>2</sup></b>
.3.1.4	Cargo hold flooding	<b>Not provided</b>
.3.2	Sources of ignition	<b>Explosion protection of electrical equipment in</b> <b>Hold 1 to 5: smoke detection system IIC T5, IP56</b> <b>Hold 1: bilge level sensor IIC T5, IP68</b> <b>Hold 1: fluorescent light IIC T5, IP56</b> <b>Hold 1: incandescent light IIC T5, IP56</b> <b>Hold 1: ventilation fans IIC T5, IP56</b> <b>Hold 2 to 5: ventilation fans non-ex.-proof</b> <b>Electrical equipment is capable of being isolated in</b> <b>Hold 1: floodlight(s) IIB T2, IP56</b>
.3.3	Detection system	<b>Hold 1 to 5: Sample extraction smoke detection and alarm system</b>
.3.4.1	Mechanical ventilation	<b>Hold 1, 2: Six air changes/h</b> <b>Hold 3 to 5: Mechanical ventilation; not specified</b>
.3.4.2.1	Safety of fans	<b>Hold 1: Provided</b>
.3.4.2.2	Wire mesh guards	<b>Hold 1 to 5: Provided</b>
.3.4.3	Natural ventilation	<b>Hold 1 to 5: Provided</b>
.3.5	Bilge pumping	<b>Hold 1: Additional bilge system, isolating valve with locking device and warning signs</b>
.3.6.1	Full protective clothing	<b>Four sets</b>
.3.6.2	Additional self-contained breathing apparatuses	<b>Two sets in addition to fire-fighter's outfits</b>
.3.7	Portable fire extinguishers	<b>Additional total of 12 kg dry powder</b>
.3.8	Insulation of machinery space boundaries	<b>Hold 5: Located adjacent to engine room bulkhead (not insulated)</b> <b>On deck space between frame no. 16 and 36: Located above engine room (deck(s) not insulated)</b>
.3.9	Water-spray system	<b>Not applicable</b>
.3.10	Separation of ro-ro spaces	<b>Not applicable</b>