

# DOCUMENT OF COMPLIANCE

## Special Requirements for Ships Carrying Dangerous Goods

Issued in pursuance of the requirements of Regulation  
 II-2/19.4  
 of the International Convention for the Safety of Life at Sea, 1974, as amended,  
 under the authority of the Government of

Republic of Singapore  
*(name of state)*

**by American Bureau of Shipping**

Particulars of Ship:

Name of Ship		Distinctive Number or Letters	
<b>WAN HAI A13</b>		402503 9V7413	
Port of Registry	Ship Type	IMO Number (if applicable)	
Singapore	Cargo Ship 19.2.2.2	9941142	

**THIS IS TO CERTIFY:**

1. that the construction and equipment of the above mentioned ship have been found to comply with the provisions of Regulation II-2/19 of the International Convention for the Safety of Life at Sea, 1974, as amended; and
2. that the ship is suitable for the carriage of those classes of dangerous goods as specified in the appendix hereto, subject to any provisions in the International Maritime Dangerous Goods (IMDG) Code and the International Maritime Solid Bulk Cargoes (IMSBC) Code for individual substances, materials or articles also being complied with.

This Document is valid until 15 January 2029

Completion date of the survey on which this Document is based: 16 January 2024

Issued at Geoje, Korea, Republic of on 16 January 2024  
*(Place of Issue of Document)* *(Date of Issue)*



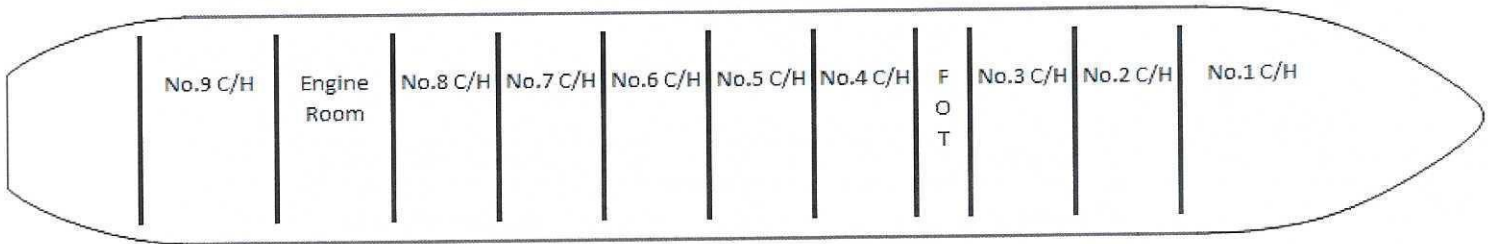
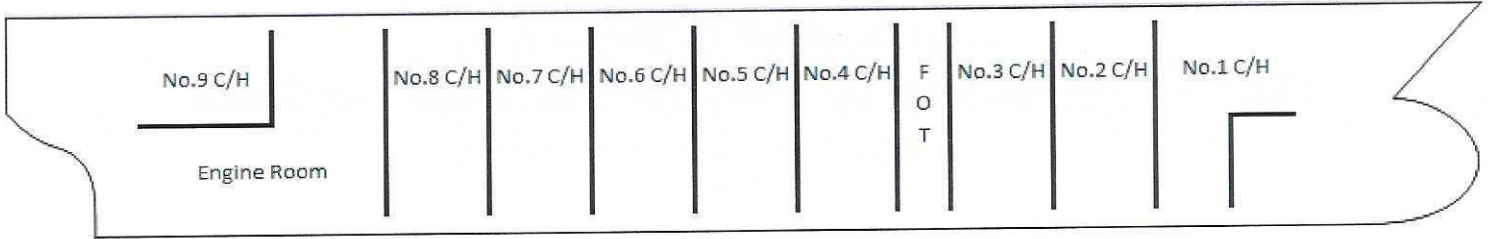
*(Signature)*  
**Electronically Signed By**  
**Tak, Ki-Il, Geoje Port**  
 Surveyor, American Bureau of Shipping

<https://ABSeCert.Eagle.org>

NOTE: Carriage of dangerous goods as defined in Regulations VII/1 and VII/7 of SOLAS 1974, as amended, shall be in accordance with IMDG Code, IMSBC Code, and supplemental requirements, which may be imposed by the Administration. There are no special requirements in the above mentioned regulation II-2/19 for the carriage of dangerous goods of classes 6.2 and 7, and for the carriage of dangerous goods in limited quantities, as required in chapter 3.4 of the IMDG Code, and excepted quantities, as required in chapter 3.5 of the IMDG Code.

**APPENDIX**

Indicate the location of the cargo spaces on the diagrams below



**CARGO SPACES CARRYING SOLID DANGEROUS GOODS IN BULK**

Name of Cargo Space	Type of Cargo Space (Reg. 19.2.2)	CLASSES OF DANGEROUS GOODS PERMITTED TO BE CARRIED						
		Answer "Yes" or "No" in space provided for classes of dangerous goods permitted to be carried.						
		4.1	4.2	4.3	5.1	6.1	8	9
		Flammable Solids	Flammable Solids (substances liable to spontaneous combustion)	Flammable Solids (substances which in contact with water, emit flammable gases)	Oxidizing Substances	Poisonous (toxic) Substances	Corrosives	Miscellaneous Dangerous Substances
-	-	-	-	-	-	-	-	-

Remarks related to the information in the table above as applicable (attach additional pages if necessary).

**CARGO SPACES CARRYING DANGEROUS GOODS EXCEPT SOLID DANGEROUS GOODS IN BULK**

		CLASSES OF DANGEROUS GOODS PERMITTED TO BE CARRIED																										
		Answer "Yes" or "No" in space provided for classes of dangerous goods permitted to be carried.																										
Name of Cargo Space	Type of Cargo Space (Reg. 19.2.2)	1.1-1.6	1.4.S	2.1	2.2	2.3*	2.3*	3	3	4.1	4.2	4.3**	4.3	5.1	5.2***	6.1	6.1	6.1	6.1	6.1	8	8	8	8	8	8	9	
		Explosives (Divisions 1.1-1.6)	Explosives (Division 1.4 Compatibility "Group S")	Flammable Gases (compressed liquefied, dissolved under pressure)	Non-Flammable, Non-Toxic Gases (compressed, liquefied, dissolved under pressure)	Flammable Toxic Gases (compressed, liquefied, dissolved under pressure)	Non-Flammable Toxic Gases (compressed, liquefied, dissolved under pressure)	Flammable Liquids (Flashpoint < 23°C)	Flammable Liquids (Flashpoint ≥ 23°C and ≤ 60°C)	Flammable Solids (self-reactive substances and solid desensitized explosives)	Substances liable to spontaneous combustion	Liquids (substances which, in contact with water, emit flammable gases)	Solids (substances which, in contact with water, emit flammable gases)	Oxidizing Substances	Organic Peroxides	Toxic (or poisonous) Substances - Liquids (Flashpoint < 23°C)	Toxic (or poisonous) Substances - Liquids (Flashpoint ≥ 23°C and ≤ 60°C)	Toxic (or poisonous) Substances - Liquids	Toxic (or poisonous) Substances - Solids	Toxic (or poisonous) Substances - Solids	Corrosive Substances - Liquids (Flashpoint < 23°C)	Corrosive Substances - Liquids (Flashpoint ≥ 23°C and ≤ 60°C)	Corrosive Substances - Liquids	Corrosive Substances - Solids	Corrosive Substances - Solids	Corrosive Substances - Solids	Miscellaneous dangerous substances and articles and environmentally hazardous substances	
Hold No. 1 & 2	Reg.19.2.2.2	No	Yes (2,3)	Yes	Yes	No	Yes	Yes (3)	Yes	Yes	Yes	Yes	Yes	Yes	No	Yes (3)	Yes	Yes	Yes	Yes	Yes	Yes	Yes	Yes	Yes	Yes	Yes (6,7)	
Hold No. 3 thru 8	Reg.19.2.2.2	No	No	Yes	Yes	No	Yes	No	Yes	Yes	Yes	Yes	Yes	No	No	Yes	Yes	Yes	Yes	Yes	No	Yes	Yes	Yes	Yes	Yes	Yes (6,7)	
Hold No. 9	Reg.19.2.2.2	No	No	Yes	Yes	No	Yes	No	Yes	Yes	Yes	Yes	Yes	No	No	Yes	Yes	Yes	Yes	Yes	No	Yes	Yes	Yes	Yes	Yes (6,7)		
Open deck	Reg.19.2.2.2	Yes (1)	Yes	Yes	Yes	Yes	Yes	Yes	Yes	Yes	Yes	Yes	Yes	Yes	Yes	Yes	Yes	Yes	Yes	Yes	Yes	Yes	Yes	Yes	Yes	Yes	Yes (6,7)	

Remarks related to the information in the table above as applicable (attach additional pages if necessary).

- Stow 3 m horizontally away from the machinery space boundaries in all cases.
- Other than hydrogen and hydrogen mixtures
- Electrical equipment other than of a certified safety type meeting IP55/II/B/T4 is to be completely isolated from the electrical system and is to be protected against unauthorized re-connection.
- (Stowage) Refer to the IMDG Code.
- Except dangerous goods having a subsidiary risk class 6.1
- (Only applicable to dangerous goods evolving flammable vapour listed in the IMDG Code) Electrical equipment other than of a certified safety type is to be completely isolated from the electrical system and is to be protected against unauthorized re-connection.
- Except "mechanically-ventilated spaces" are required by the IMDG Code.

\*Stowage of class 2.3 dangerous goods having subsidiary risk class 2.1 under deck or in enclosed ro-ro spaces is prohibited.  
 \*\*Stowage of class 4.3 liquids dangerous goods having a flashpoint < 23 Celsius under deck or in enclosed ro-ro spaces is prohibited.  
 \*\*\*Stowage of class 5.2 dangerous goods under deck or in enclosed ro-ro spaces is prohibited.

## ENDORSEMENT FOR ANNUAL AND INTERMEDIATE SURVEYS

**THIS IS TO CERTIFY** that, at a survey the ship was found to comply with the relevant requirements of SOLAS.

Annual Survey:

Signed:

\_\_\_\_\_  
*(Surveyor, American Bureau of Shipping)*

Place:

Date:

\_\_\_\_\_  
\_\_\_\_\_

Annual / Intermediate <sup>1</sup> Survey:

Signed:

\_\_\_\_\_  
*(Surveyor, American Bureau of Shipping)*

Place:

Date:

\_\_\_\_\_  
\_\_\_\_\_

Annual / Intermediate <sup>1</sup> Survey:

Signed:

\_\_\_\_\_  
*(Surveyor, American Bureau of Shipping)*

Place:

Date:

\_\_\_\_\_  
\_\_\_\_\_

Annual Survey:

Signed:

\_\_\_\_\_  
*(Surveyor, American Bureau of Shipping)*

Place:

Date:

\_\_\_\_\_  
\_\_\_\_\_



<sup>1</sup> Delete as appropriate