



Document of Compliance

Special Requirements for Ships Carrying Dangerous Goods

Issued in pursuance of the requirement of regulation II-2/19.4 of the International Convention for Safety of Life at Sea, 1974, as amended **under the authority of the Government of the Republic of Singapore** by Lloyd's Register Classification Society (China) Co., Ltd..

	Particulars of ship
Name of ship	WAN HAI 721
Distinctive number or letters	9V7143
Port of registry	SINGAPORE
Ship type	Container
Gross tonnage	75,582
IMO number	9398242
Date on which keel laid	07 April 2009

This is to certify:

1. that the construction and equipment of the above mentioned ship have been found to comply with the provisions of regulation II-2/19 of the International Convention for the Safety of Life at Sea, 1974 as amended; and
2. that the ship is suitable for the carriage of those classes of dangerous goods as specified in the appendix attached hereto, subject to any provisions in the International Maritime Dangerous Goods (IMDG) Code and the International Maritime Solid Bulk Cargoes (IMSBC) Code for individual substances, materials or articles also being complied with.

Important:

Possession of this Document does not absolve the Master from his responsibility to comply with safe operational procedures including those laid down in the International Maritime Dangerous Goods Code and the International Maritime Solid Bulk Cargoes (IMSBC) Code.

This Document is valid until **23 July 2029**

Date of completion of the survey on which this Document of Compliance is based **26 April 2024**

Issued at **Zhoushan** on **26 April 2024**



This document is signed electronically in accordance with IMO FAL.5/Circ.39/Rev.2 and take precedence over any printed version.

H.F.Mu

Surveyor to Lloyd's Register Classification Society (China) Co., Ltd.

a member of the Lloyd's Register group.

Note: There are no special requirements in the above-mentioned regulation II-2/19 for the carriage of dangerous goods of classes 6.2 and 7, or for the carriage of dangerous goods in limited quantities as defined in chapter 3.4 of the IMDG Code, and excepted quantities, as defined in chapter 3.5 of the IMDG Code.

Lloyd's Register Group Limited, its affiliates and subsidiaries and their respective officers, employees or agents are, individually and collectively, referred to in this clause as 'Lloyd's Register'. Lloyd's Register assumes no responsibility and shall not be liable to any person for any loss, damage or expense caused by reliance on the information or advice in this document or howsoever provided, unless that person has signed a contract with the relevant Lloyd's Register entity for the provision of this information or advice and in that case any responsibility or liability is exclusively on the terms and conditions set out in that contract.

Form 1599a (2023.07)

When printed, the paper printout is produced from the electronically signed document in accordance with IMO FAL.5/Circ.39/Rev.2 and does not require a handwritten signature. Validation and authentication can be obtained from <https://www.lr.org/> by using the Unique Tracking Number (UTN): 86924913791362



Appendix		Cargo Space	1	2	3	4	5	6	Comments
Cargo Space Name		Cargo Hold 1-3	Cargo Hold 4-6	Cargo Hold 7	Cargo Hold 8	Weather deck 1-7	Weather deck 8		
Class	Type *	2B	2B	2B	2B	6	6		
1.1-1.6	Explosives	---	---	---	---	P	---		
1.4(S)	Explosives, Division 1.4 Compatibility group 'S'	P	P	P	P	P	P		
2.1	Flammable Gases	P	---	---	---	P	P		
2.2	Non-flammable, Non-toxic Gases	P	P	P	P	P	P		
2.3	Toxic Gases (flammable)	---	---	---	---	P	P		
2.3	Toxic Gases (non-flammable)	---	---	---	---	P	P		
3	Flammable liquids - low and intermediate flashpoint, <23°C	P	---	---	---	P	P		
3	Flammable liquids - high flashpoint, ≥23°C but ≤60°C	P	P	P	P	P	P		
4.1	Flammable solids, self-reactive substances and solid desensitized explosives	P	P	P	P	P	P		
4.2	Substances liable to spontaneous combustion	P	P	P	P	P	P		
4.3	Substances which, in contact with water, emit flammable gases (liquids)	P	---	---	---	P	P		
4.3	Substances which, in contact with water, emit flammable gases (solids)	P	P	P	P	P	P		
5.1	Oxidising substances (agents)	P	P	P	P	P	P		
5.2	Organic Peroxides	---	---	---	---	P	P		
6.1	Toxic Substances (liquids) - low and intermediate flashpoint, <23°C	P	---	---	---	P	P		
6.1	Toxic Substances (liquids) - high flashpoint, ≥23°C but ≤60°C	P	---	---	---	P	P		
6.1	Toxic Substances (liquids) - non flammable	P	---	---	---	P	P		
6.1	Toxic Substances (solids)	P	P	P	P	P	P		
8	Corrosives (liquids) - low and intermediate flashpoint, <23°C	P	---	---	---	P	P		
8	Corrosives (liquids) - high flashpoint, ≥23°C but ≤60°C	P	---	---	---	P	P		
8	Corrosives (liquids) - non flammable	P	P	P	P	P	P		
8	Corrosives (solids)	P	P	P	P	P	P		
9	Miscellaneous Dangerous Substances and Articles	P	P	P	P	P	P		
B	BULK GOODS ALLOWED		A	PACKAGED AND BULK GOODS ALLOWED					
P	PACKAGED GOODS ALLOWED		---	NOT ALLOWED					



* Space Type Definitions

The Space Types listed in Appendix of this Document of Compliance refer to the following types of cargo space in which dangerous goods may be carried:

- 1 Ships and cargo spaces not specifically designed for the carriage of freight containers but intended for the carriage of dangerous goods in packaged form including goods in freight containers and portable tanks.
- 2A Purpose-built container ships and cargo spaces intended for the carriage of dangerous goods in freight containers and portable tanks (Open and closed freight containers).
- 2B Purpose-built container ships and cargo spaces intended for the carriage of dangerous goods in freight containers and portable tanks (Closed freight containers and portable tanks only).
- 3A Ro-ro ships and ro-ro cargo spaces intended for the carriage of dangerous goods (Closed ro-ro cargo spaces not capable of being sealed).
- 3B Ro-ro ships and ro-ro cargo spaces intended for the carriage of dangerous goods (Closed ro-ro cargo spaces capable of being sealed).
- 3C Ro-ro ships and ro-ro cargo spaces intended for the carriage of dangerous goods (Open ro-ro cargo spaces).
- 4 Ships and cargo spaces intended for the carriage of solid dangerous goods in bulk.
- 5 Ships and cargo spaces intended for the carriage of dangerous goods other than liquids and gases in bulk in shipborne barges.
- 6 Weather decks.



General Notes

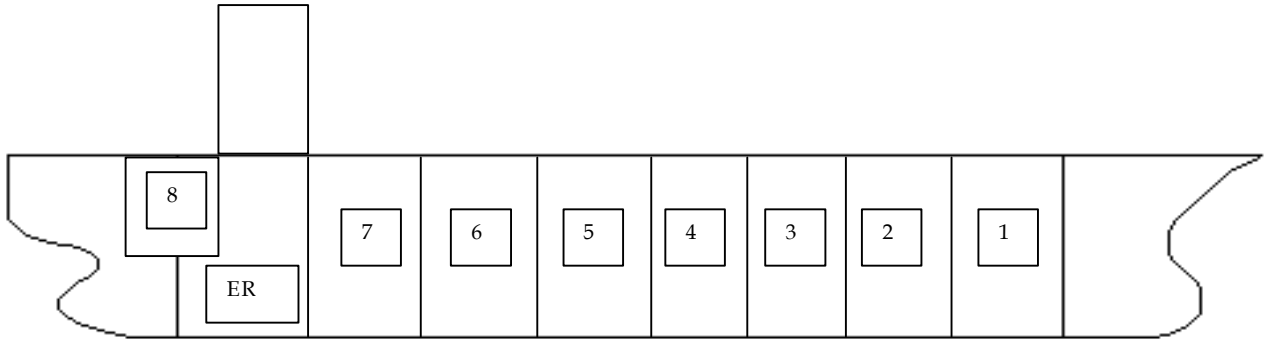
- A** Goods of class 1 (except class 1.4S) to be stowed not less than a horizontal distance of 12m from living quarters, life-saving appliances and areas with public access. Goods of class 1 shall not be stowed within a horizontal distance of 6 m from potential sources of ignition. Goods of class 1 (except class 1.4S) are to be stowed 3m horizontally from the machinery space boundary in all cases.
- C** If the deck separating a machinery space of category A and a weather deck above is uninsulated, dangerous goods are prohibited only for the portion of the weather deck located above the machinery space.
- D** Stowage and segregation of freight containers of different classes of dangerous goods in the hold and on the upper deck in compliance with the applicable requirements of the IMDG Code remain the responsibility of the Master.
- E** For classes 2, 3, 6.1, and 8, when carried in closed freight containers in purpose built dedicated container cargo spaces, the ventilation rate may be reduced to not less than two air changes per hour. For the purpose of this requirement a portable tank is a closed container.
- G** Under the provisions of the IMDG Code, stowage of class 5.2 dangerous goods under deck or in enclosed ro-ro spaces is prohibited.
- I** Prior to the carriage of any Class of Dangerous Goods, a fixed gas fire-extinguishing system must be provided, in accordance with 1974 SOLAS chapter II-2, regulation 53.1.2 or 10.7.2
- J** Dangerous goods requiring electrical equipment of a standard greater than IIB?T4? should not be carried under deck.
- K** Under the provisions of the IMDG Code, stowage of class 2.3 having subsidiary risk class 2.1 under deck or in enclosed ro-ro spaces is prohibited.
- L** Under the provisions of the IMDG Code, stowage of class 4.3 liquids having a flashpoint less than 23OC under deck or in enclosed ro-ro spaces is prohibited.



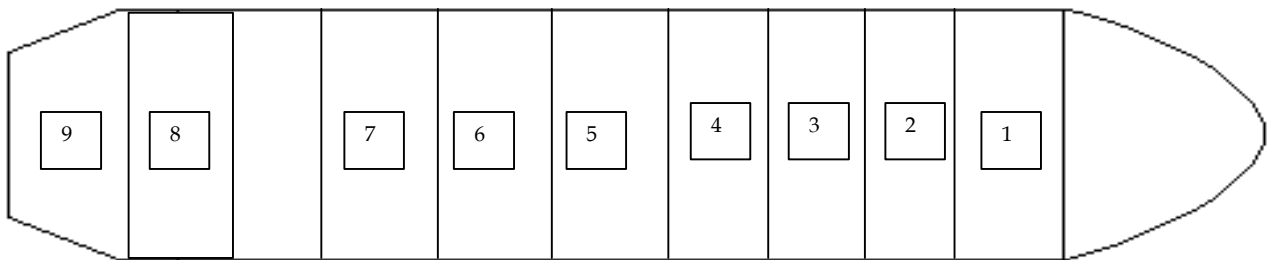
Ship Layout

Profile

Cargo Hold



Weather Deck





Annual surveys

This is to certify that, at a survey, the ship was found to comply with the relevant provisions of SOLAS.

1st Annual survey

Signed:
Place of survey
Date

2nd Annual survey

Signed:
Place of survey
Date

3rd Annual survey

Signed:
Place of survey
Date

4th Annual survey

Signed:
Place of survey
Date

