



Document of Compliance

Special Requirements for Ships Carrying Dangerous Goods

Issued in pursuance of the requirement of regulation II-2/19.4 of the International Convention for Safety of Life at Sea, 1974, as amended under the authority of the Government of the Republic of Singapore by Lloyd's Register Classification Society (China) Co., Ltd..

Particulars of ship	
Name of ship	WAN HAI 627
Distinctive number or letters	9V8083
Port of registry	SINGAPORE
Ship type	CONTAINER SHIP
Gross tonnage	66,280
IMO number	9295945
Date on which keel laid	15 September 2005

This is to certify:

1. that the construction and equipment of the above mentioned ship have been found to comply with the provisions of regulation II-2/19 of the International Convention for the Safety of Life at Sea, 1974 as amended; and
2. that the ship is suitable for the carriage of those classes of dangerous goods as specified in the appendix attached hereto, subject to any provisions in the International Maritime Dangerous Goods (IMDG) Code and the International Maritime Solid Bulk Cargoes (IMSBC) Code for individual substances, materials or articles also being complied with.

Important:

Possession of this Document does not absolve the Master from his responsibility to comply with safe operational procedures including those laid down in the International Maritime Dangerous Goods Code and the International Maritime Solid Bulk Cargoes (IMSBC) Code.

This Document is valid until **23 April 2031**

Date of completion of the survey on which this Document of Compliance is based **25 March 2026**

Issued at **Shanghai** on **25 March 2026**



Y. Tan
Surveyor to Lloyd's Register Classification Society (China) Co., Ltd.

a member of the Lloyd's Register group.

Note: There are no special requirements in the above-mentioned regulation II-2/19 for the carriage of dangerous goods of classes 6.2 and 7, or for the carriage of dangerous goods in limited quantities as defined in chapter 3.4 of the IMDG Code, and excepted quantities, as defined in chapter 3.5 of the IMDG Code.

Lloyd's Register Group Limited, its affiliates and subsidiaries and their respective officers, employees or agents are, individually and collectively, referred to in this clause as 'Lloyd's Register'. Lloyd's Register assumes no responsibility and shall not be liable to any person for any loss, damage or expense caused by reliance on the information or advice in this document or howsoever provided, unless that person has signed a contract with the relevant Lloyd's Register entity for the provision of this information or advice and in that case any responsibility or liability is exclusively on the terms and conditions set out in that contract.

Appendix

Cargo Space		1	2	3	4	5	6	Weather Deck	Comments
Cargo Space Name		No 2 Cargo Hold	No 3 Cargo Hold	No 4 Cargo Hold					
Class	Type *	2B	2B	2B	---	---	6		
1.1-1.6	Explosives	---	---	---	---	---	P		
1.4(S)	Explosives, Division 1.4 Compatibility group 'S'	P	P	P	---	---	P		
2.1	Flammable Gases	P	P	P	---	---	P		
2.2	Non-flammable, Non-toxic Gases	P	P	P	---	---	P		
2.3	Toxic Gases (flammable)	P	P	P	---	---	P		
2.3	Toxic Gases (non-flammable)	P	P	P	---	---	P		
3	Flammable liquids - low and intermediate flashpoint, <23°C	P	P	P	---	---	P		
3	Flammable liquids - high flashpoint, ≥23°C but ≤60°C	P	P	P	---	---	P		
4.1	Flammable solids, self-reactive substances and solid desensitized explosives	P	P	P	---	---	P		
4.2	Substances liable to spontaneous combustion	P	P	P	---	---	P		
4.3	Substances which, in contact with water, emit flammable gases (liquids)	P	P	P	---	---	P		
4.3	Substances which, in contact with water, emit flammable gases (solids)	P	P	P	---	---	P		
5.1	Oxidising substances (agents)	P	P	P	---	---	P		
5.2	Organic Peroxides	---	---	---	---	---	---		
6.1	Toxic Substances (liquids) - low and intermediate flashpoint, <23°C	P	P	P	---	---	P		
6.1	Toxic Substances (liquids) - high flashpoint, ≥23°C but ≤60°C	P	P	P	---	---	P		
6.1	Toxic Substances (liquids) - non flammable	P	P	P	---	---	P		
6.1	Toxic Substances (solids)	P	P	P	---	---	P		
8	Corrosives (liquids) - low and intermediate flashpoint, <23°C	P	P	P	---	---	P		
8	Corrosives (liquids) - high flashpoint, ≥23°C but ≤60°C	P	P	P	---	---	P		
8	Corrosives (liquids) - non flammable	P	P	P	---	---	P		
8	Corrosives (solids)	P	P	P	---	---	P		
9	Miscellaneous Dangerous Substances and Articles	P	P	P	---	---	B		
B	BULK GOODS ALLOWED		A						
P	PACKAGED GOODS ALLOWED		---						



* Space Type Definitions

The Space Types listed in Appendix of this Document of Compliance refer to the following types of cargo space in which dangerous goods may be carried:

- 1 Ships and cargo spaces not specifically designed for the carriage of freight containers but intended for the carriage of dangerous goods in packaged form including goods in freight containers and portable tanks.
- 2A Purpose-built container ships and cargo spaces intended for the carriage of dangerous goods in freight containers and portable tanks (Open and closed freight containers).
- 2B Purpose-built container ships and cargo spaces intended for the carriage of dangerous goods in freight containers and portable tanks (Closed freight containers and portable tanks only).
- 3A Ro-ro ships and ro-ro cargo spaces intended for the carriage of dangerous goods (Closed ro-ro cargo spaces not capable of being sealed).
- 3B Ro-ro ships and ro-ro cargo spaces intended for the carriage of dangerous goods (Closed ro-ro cargo spaces capable of being sealed).
- 3C Ro-ro ships and ro-ro cargo spaces intended for the carriage of dangerous goods (Open ro-ro cargo spaces).
- 4 Ships and cargo spaces intended for the carriage of solid dangerous goods in bulk.
- 5 Ships and cargo spaces intended for the carriage of dangerous goods other than liquids and gases in bulk in shipborne barges.
- 6 Weather decks.



General Notes

Goods of Class 1 should be stowed within a horizontal distance of 6 metres from any fire, machinery exhausts, galley uptakes, lockers used for combustible stores or other potential sources of ignition and not less than a horizontal distance of 8 metres from bridge, living quarters and life saving appliances.

If the weather deck forming a boundary between cargo spaces and machinery spaces of category 'A' is not insulated to A60 standard, dangerous goods are prohibited for portion of the deck located above the machinery space.

When dangerous goods of classes 2.1, 2.3, 3, 4, 5.1, 6.1, 8 and 9 are carried underdeck, they are to be carried in closed freight containers only.

For classes 2, 3, 4(liquid) and 5.1 (liquid), 6.1, 8 and 9 when carried in closed freight container in purpose built dedicated container cargo spaces, the ventilation rate may be reduced to not less than two air changes per hour. For the purpose of this requirement a portable tank is a closed container.

Power ventilation is not required for class 4 (soild) and 5.1 (soild) when carried in closed freight containers in purpose built dedicated container cargo spaces. For the purpose of this requirement a portable tank is a closed container.

Stowage and segregation of freight containers of different classes of dangerous goods in the hold and on the upper in compliance with the applicable requirements of the IMDG Code remain the responsibility of Master.

There are no special requirements in Regulation II-2/19 for carriage of dangerous goods Classes 6.2 and 7, or for the carriage of dangerous goods in limited quantities as defined in Chapter 3.4 of the IMDG Code.

As per IMDG Code carriage of Class 5.2 Dangerous Goods, underdeck or in enclosed ro-ro spaces is prohibited.

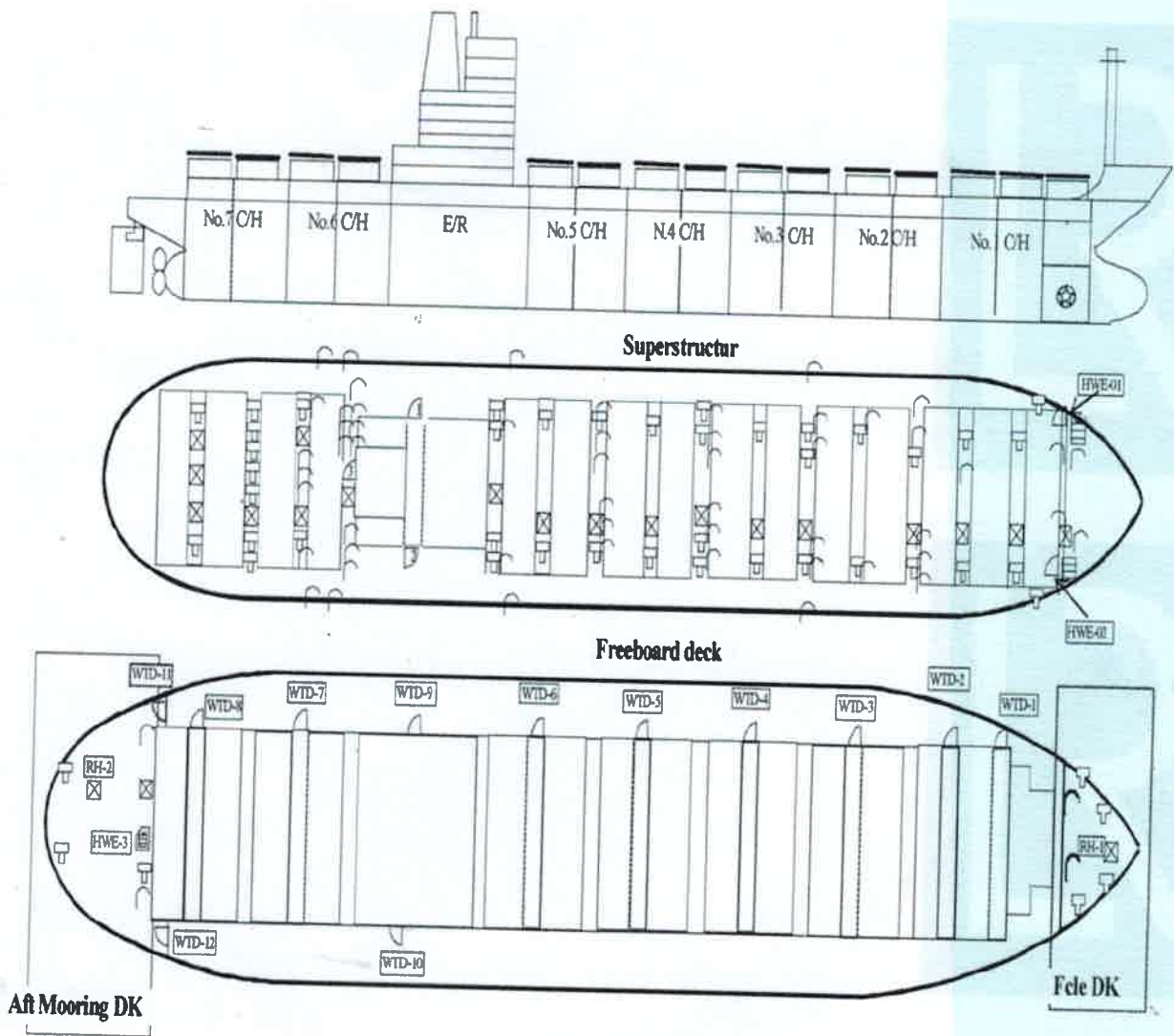
Prior to the carriage of any Class of Dangerous Goods, a fixed gas fire extinguishing system must be provided in accordance to SOLAS 1974 as amended, Chapter II-2, Reg 10.7.2.

Goods of class 2.3 which, according to the IMDG Code have a subsidiary risk class of 2.1 not to be carried underdeck or in enclosed ro-ro spaces.

Goods of class 4.3 which, according to the IMDG have a flash point of less than 23 C not to be carried on packaged from underdeck or in enclosed ro-ro spaces.



Ship Layout



Annual surveys

This is to certify that, at a survey, the ship was found to comply with the relevant provisions of SOLAS.

1st Annual survey

Signed:

Place of survey

Date

2nd Annual survey

Signed:

Place of survey

Date

3rd Annual survey

Signed:

Place of survey

Date

4th Annual survey

Signed:

Place of survey

Date

