



## DOCUMENT OF COMPLIANCE

### Special Requirements for Ships Carrying Dangerous Goods

Issued in pursuance of the requirement of regulation II-2/19.4 of the International Convention for Safety of Life at Sea, 1974, as amended, under the authority of the Government of  
**the Republic of Singapore**  
by **CHINA CLASSIFICATION SOCIETY**

Name of ship	<u>WAN HAI 272</u>
Distinctive number or letters	<u>9V7585</u>
Port of registry	<u>Singapore</u>
Ship type	<u>Container Ship</u>
IMO No.	<u>9493262</u>

#### THIS IS TO CERTIFY:

1. that the construction and equipment of the above mentioned ship was found to comply with the provisions of regulation II-2/19 of the International Convention for the Safety of Life at Sea, 1974, as amended; and
2. that the ship is suitable for the carriage of those classes of dangerous goods as specified in the appendix hereto, subject to any provisions in the International Maritime Dangerous Goods (IMDG) Code and the International Maritime Solid Bulk Cargoes Code (IMSBC Code) for individual substances, materials or articles also being complied with.

This document is valid until December 15, 2026

Completion date of the survey on which this certificate is based: December 5, 2021

Survey conducted by **Guo Xiao**.

Issued at Zhoushan

Issued on December 5, 2021



(Fu Bin)

CHINA CLASSIFICATION SOCIETY

#### NOTE:

1. Ships constructed on or after 1 July 2002 have to comply with SOLAS reg. II-2/19 and all the requirements introduced with 2000 SOLAS amendments.
2. There are no special requirements in the above-mentioned regulation II-2/19 for the carriage of dangerous goods of classes 6.2 and 7, and for the carriage of dangerous goods in limited quantities, as required in chapter 3.4 of the IMDG Code, and excepted quantities, as required in chapter 3.5 of the IMDG Code.
3. Solid bulk cargo shall not be carried unless it is listed in the cargo list of Certificate of Compliance Required by IMSBC Code.



**APPENDIX**  
**SPACES TO BE INDICATED IN THE PLANS NEXT PAGE WITH NUMBERS**  
**CORRESPONDING WITH THE TABLE BELOW**

Class \ Hold	CH 1-4	Weather Deck Fr. Nos.15~32(ER)	Deck spaces 1~5							
1.1-1.6	X	X	P							
1.4S	P	P	P							
2.1	X	X	P							
2.2	P	X	P							
2.3 flammable	X	X	P							
2.3 non-flammable	X	X	P							
3 liquids FP<23°C	X	X	P							
3 liquids 23°C≤FP≤60°C	P	X	P							
4.1	P(1)	X	P							
4.2	P(1)	X	P							
4.3 liquids	C(2)	X	P							
4.3 solids	C	X	P							
5.1	P(1)	P(6)	P							
5.2	X	X	P							
6.1 liquids	X	P(4)	P(4)							
6.1 liquids FP<23°C	X	X	P							
6.1 liquids 23°C≤FP≤60°C	X	X	P							
6.1 solids	P(1)	P	P							
8 liquids	P(3)(4)	P(4)	P(4)							
8 liquids FP<23°C	X	X	P							
8 liquids 23°C≤FP≤60°C	C(3)	X	P							
8 solids	P	P	P							
9	P(1)(5)	P	P							

P — Indicates PACKAGED GOODS PERMITTED  
 A — Indicates PACKAGED AND BULK GOODS ALLOWED  
 X — NOT ALLOWED  
 Note: Cargoes in bulk may be listed individually by name and class

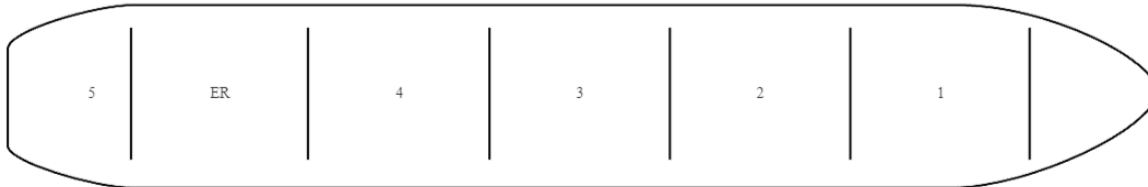


PLANS:

UNDER-DECK SPACES



ON DECK SPACES



Remarks related to the information in previous table:

- (1) If stowage in a "mechanically ventilated space" is stipulated by the IMDG Code, in closed freight containers.
- (2) Except goods having a flashpoint less than 23°C listed in the IMDG Code.
- (3) Except goods having a subsidiary risk class 6.1.
- (4) Only goods having a flashpoint more than 60°C listed in the IMDG Code.
- (5) Other than goods evolving flammable vapour exclusively class 9.
- (6) Except goods for which stowage "protected from sources of heat" is stipulated by the IMDG Code.
- (7) The dangerous goods shall not be stowed within 3m horizontally from machinery space boundaries.
- (8) C indicates IN CLOSED FREIGHT CONTAINERS OR PORTABLE TANKS PERMITTED.

